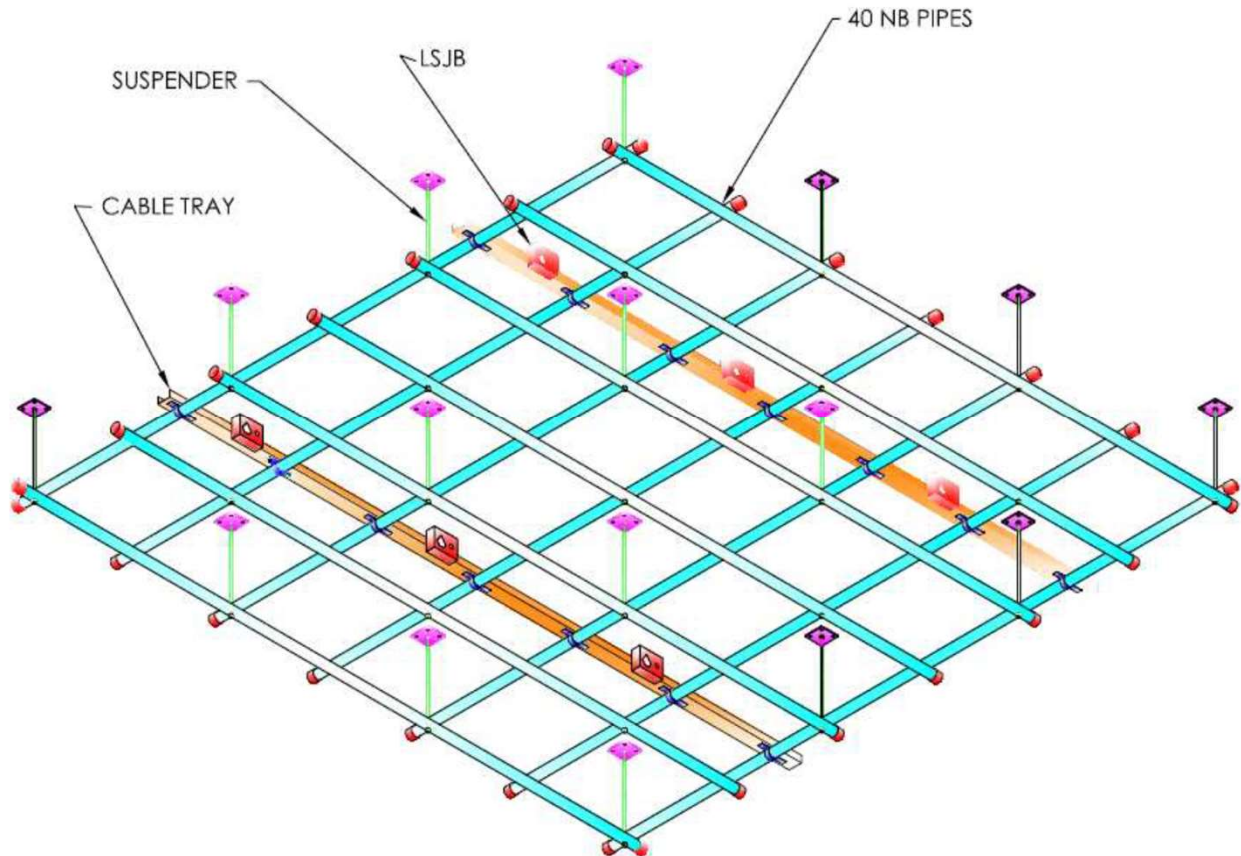


Canara offers a wide range fixed pipe grid options to suspend the lighting fixtures in Theaters, Auditoriums and Convention centers, Studios, Production House, Film Institutions.



SPECIAL FEATURES

- Designed with the highest standards of construction using 40NB MS tubes duly epoxy polyester powder coated in black matt texture finish.
- Pipe grid is constructed in different sizes: 1X1, 1.2X1.2, 1.5X1.5 meter. The grid is suspended using M12 threaded rod suspenders or angle suspenders.
- Pipe grid is permanently mounted approx. 2 ft. below ceiling and lighting fixtures can be hung, adjusted and maintained from floor using clamps, flexi-adaptors and pole operated yoke systems of light fixtures.

TECHNICAL SPECIFICATIONS

- Standard Dimensions : 1X1 meter, 1.2X1.2 meter, 1.5X1.5 meter.
- Safe Working Load : 40 kg / Sqm
- Pipe Specification : 40 Nominal Bore, 2mm / 3mm wall thickness, 48mm Outer diameter.
- All the materials under gone through 7 tank process to keep them rust free with and duly epoxy polyester powder coated in black matt texture finish.

MODELS : FPG-1, FPG-1.2, FPG-1.5,